

A short explanation about profiles in the PDF-XChange Standard Driver.

Profiles

Profiles represent a collection of printer settings. Currently they include all possible settings from the “Printing Preferences” pages of the driver, except the list of custom forms. Custom forms are kept outside of profiles, however this may cause what can appear as inconsistencies in usage.

The default profile is stored under HKEY_LOCAL_MACHINE and is treated as read-only, users cannot overwrite it. For users, profiles are stored in the registry under HKEY_CURRENT_USER.



DEVMODE

Every printer in Windows stores its settings in the registry in the structure called DEVMODE. That structure has a part common for all printers, where settings like paper size, dpi, orientation, etc. are stored. It may contain additional data known as PRIVATEDEVMODE. The structure of PRIVATEDEVMODE is designed by individual printer developers and typically is not published.

Currently, the PDF-XChange driver stores all settings, except the list of custom forms, in its DEVMODE.

How it works - DEVMODE and Profiles working together.

Selecting a profile from the list of profiles copies all settings from that profile to the DEVMODE; the printer takes the name of chosen profile for display in the UI (User Interface). Selecting the ‘fake’ profile “Default Profile” causes all settings to be reset to their default built-in values.

Any change to the printer’s settings modifies DEVMODE but not the original Profile. The profile remains unmodified. That is the most important change that was introduced in build 308. Any changes can be stored back to the profile by using the “Save” button  in the printer preferences dialog. If the original “Default Settings” profile is loaded when changes are made it cannot be saved (the “Default Settings” profile is read only), this button will be disabled and saving the changes must be done using the “Save As” button  thus creating a new named profile with the current settings.

In summary:

1. Profiles are not modified until a user explicitly saves current settings to an existing or new profile.
2. Switching between profiles abandons all current settings as these settings are replaced with ones from the chosen profile.
3. Custom forms reside outside of profiles for now. Custom forms are common for all profiles.

Read Only Vs User Editable profiles

Profiles stored under HKEY_CURRENT_USER are user defined and can be modified by users. This is the default for profiles created using the GUI.

Profiles stored under HKEY_LOCAL_MACHINE are treated as read-only and users cannot overwrite them. User cannot save profiles to HKLM through the GUI, it must be done through the command line as a user with appropriate privileges.

Make a profile available to all users as Read Only

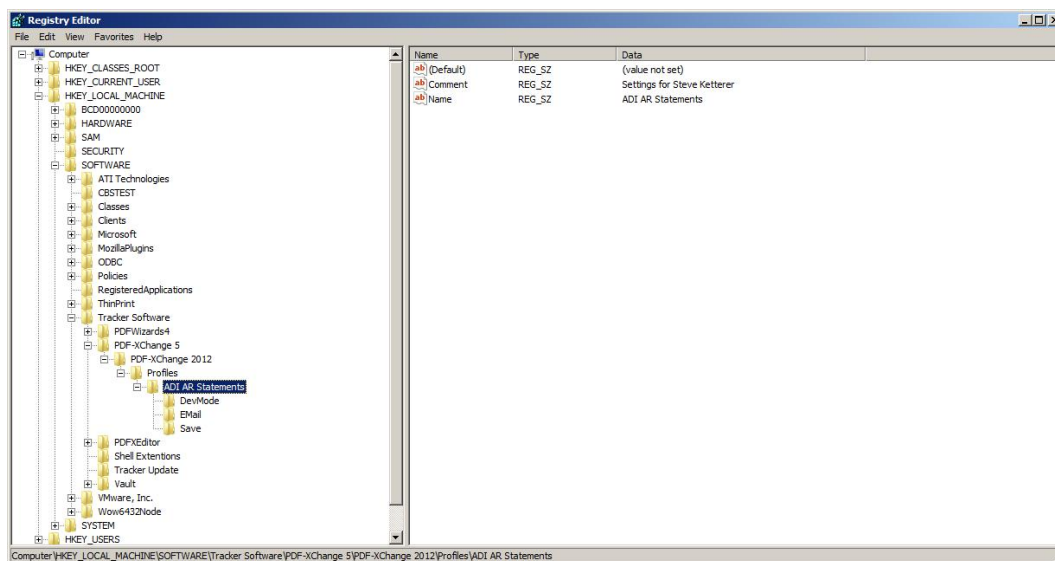
We have a command line feature that will put the profile into HKLM. This will make the profile available to all users. Users then need only go to the Printer Preferences and switch to the new profile.

The profile will be available to users on first login after running the following command line action:

```
C:\Users\Administrator> rundll32 "C:\Program Files\Tracker Software\PDF-XChange
5\drvui5.dll",DUI30_Command /InstallProfile:"C:<path to profile>\ProfileName.pp5" /PrinterName:"PDF-
XChange Printer 2012"
```

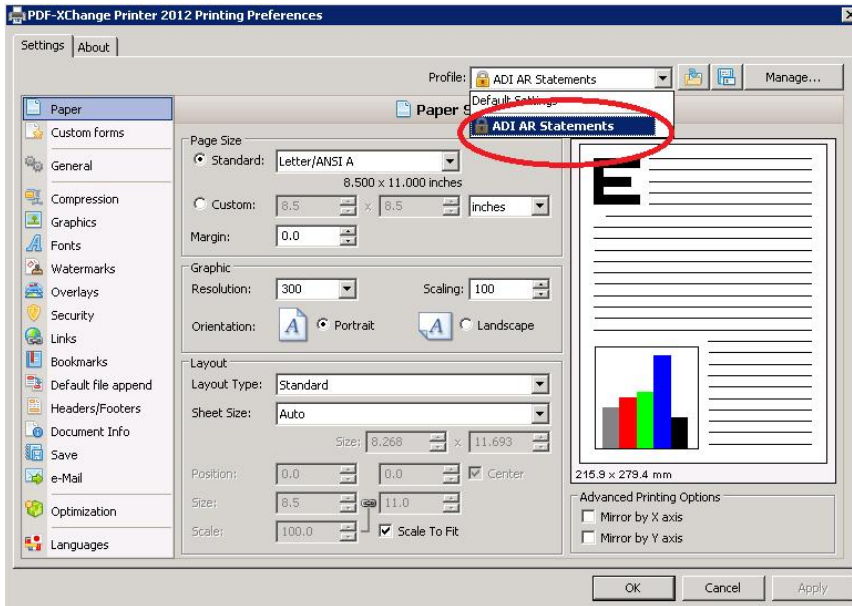
The command should return with no feedback, no success but definitely no errors.

One can check if the profile was added by looking in the registry for HKEY_LOCAL_MACHINE\SOFTWARE\Tracker Software\PDF-XChange 5\PDF-XChange 2012\Profiles\ProfileName



With that in HKLM it is available to all users and is locked. Users will not be able to change that profile. They will, however, after loading the profile be able to make changes that get applied when printing but those changes can not be applied to the profile. Loading the profile again through the GUI will return things to the state defined in HKLM.

After running the above as Admin, logging in as a standard user shows the new profile is available:

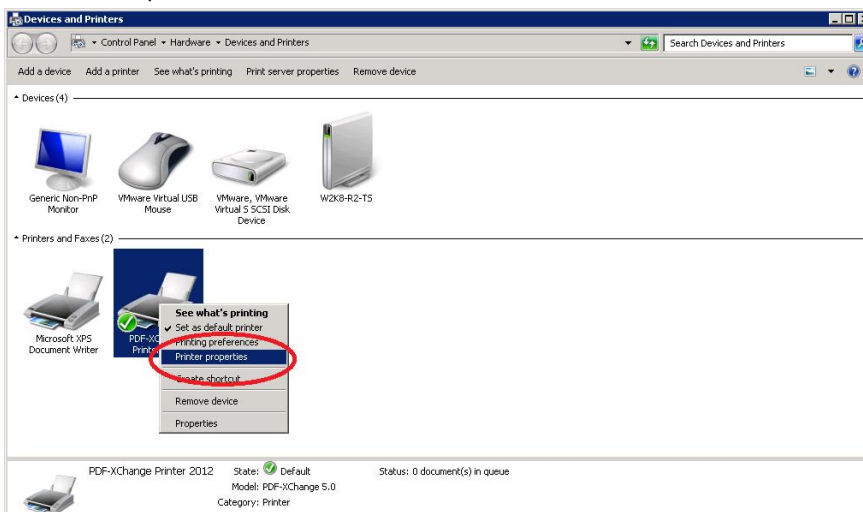


Each user can then select this available profile and load it and as long as it was the last active profile they can expect this profile to be loaded every session moving forwards.

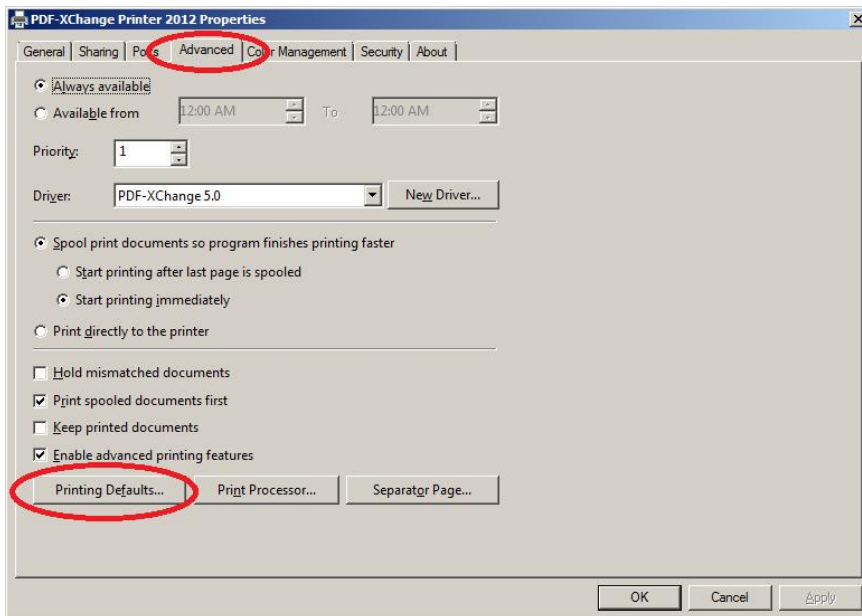
Make a Read Only profile the default

There is a way to make the profile the default for all users except those who have set the profile themselves as above.

As Admin go to the PDF-XChange Printer in the Control Panel and select Printer Properties --> (NOT Printing Preferences)



Advanced [Tab] --> Printing Defaults -->



You can select and load the profile there. Then any changes you make will go into HKLM. This is a Windows feature for any printer. Having selected the profile this way users logging into your multi-user machine will get this profile by default unless they have manually chosen a different profile.

Custom Forms

There are two lists – one stored in HKEY_CURRENT_USER, and one in HKEY_LOCAL_MACHINE (these custom forms cannot be modified by end-users).

- The list stored in HKLM is installed by default during product installation. It is Read Only and cannot be modified by users.
- The list stored in HKCU is generated by the application when users create their own custom forms. Users have full control over their own forms.
- There is no command line mechanism to move user created forms to HKLM.